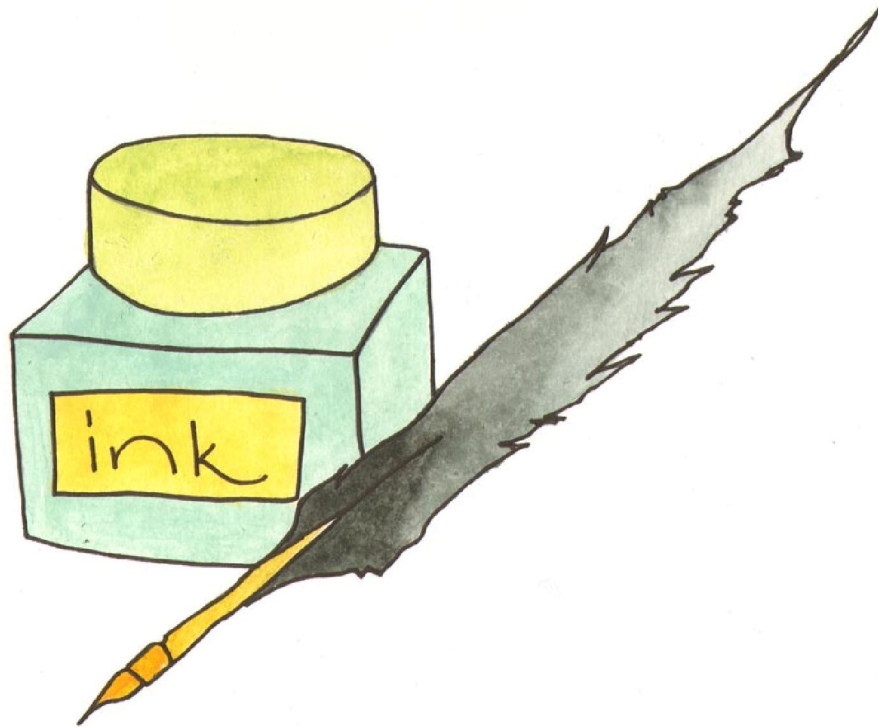


# Academic Writing Style



## What is an academic writing style?

Academic writing means writing in a more formal style than the language you use in conversation. You are expected to use this style in college but using this style of language in exam answers and essays for the Leaving Certificate may gain you extra marks.

For example when you are quoting from a text think carefully about the verb you use to introduce their ideas:

### Rather than

Thinks  
Asks  
Says  
Sees

### Consider Using

Considers or believes  
Questions  
States or asserts  
Observes

## Avoid conversational language

### Rather than

Really  
A bit  
A lot  
Maybe

### Consider Using

Very  
Rather  
A great deal  
Perhaps

## Avoid contracted words

### Rather than

Can't  
Doesn't  
It's  
Isn't

### Consider Using

Cannot  
Does not  
It is  
Is not



**Avoid starting sentences with words such as:**

**Again**  
**Although**  
**Because**  
**But**  
**And**

It is not 'wrong' to begin a sentence with these words but it is often difficult to control the grammar of the rest of the sentence if you do, and you could stuck in a very long sentence!



**Write clearly and concisely**

- **One argument per paragraph**
- **One idea per sentence**
- **You will not be marked down for the use of the first person ('I') but if you try and avoid this it will make the focus of the sentence the topic and not you, the writer. For example:**

**'I think the writer of this article is trying to make the reader feel sympathetic with his situation, but at the same time there are some amusing parts.'**

**...could be replaced by .....**

**'This article is written in a satirical style which introduces humour to the topic, however despite the use of sarcasm, the reader can still empathise with his situation.'**